



**First Response Group**

Total Security, Risk & Facilities Management

---

## **Construction, Infrastructure & Utilities Security Solutions**

Enquiries: **0330 124 5670** [info@firstresponsegroup.com](mailto:info@firstresponsegroup.com)



## Introducing FRG Construction, Infrastructure & Utilities Security Solutions

**FRG deliver site security and fire protection services nationwide throughout the full project lifecycle.**

We use our specialist construction industry expertise and experience to design and deliver innovative solutions which adapt to constantly changing site environments. From national infrastructure projects to timber frame construction, we are committed to ensuring your site is safe and your insurance obligations are met in the most efficient and cost-effective way possible.

Our competitive packages offer a new security solution, balancing physical security presence with electronic and remote monitoring technology.

**We listen – We respond – We deliver**

## Benefits

- ✓ Nationwide delivery
- ✓ Construction security specialists
- ✓ Free no obligation site surveys
- ✓ Broad range of cost-effective solutions
- ✓ Rapid response and reaction
- ✓ Insurance compliance
- ✓ Risk assessments sent direct from site
- ✓ Innovation & integration
- ✓ Highly accredited
- ✓ Socially & environmentally responsible
- ✓ Industry leaders  
Supporting national projects including:
  - Critical rail & road infrastructure schemes
  - Large scale Design & Build projects: schools, hospitals & more
  - National utilities projects
  - Residential developments

## How we do it



### **SITE SURVEY, CONSULTANCY & SYSTEM DESIGN**

**Within 7 days of request**



### **PROPOSAL**

- Security risk assessment
- Solution & cost
- CAD drawings

**Within 48hrs of site survey**



### **PROJECT SIGN-OFF**

- Agree final plan
- Agree terms
- Order receipt
- Prepare & agree implementation plan



### **INSTALLATION**

- Pre-start meeting
- Mobilisation

**Start from 48hrs from instruction (project dependent)**



### **MONITORING & RESPONSE**

- On-going audits
- Keyholder escalation
- Maintenance alerts



### **MAINTENANCE**

- System integrity
- Peace of mind
- Safety of staff & asset

# SECURITY PERSONNEL SOLUTIONS

## Trained, Trusted & Reliable

- SIA licensed security officers
- Professionally screened & vetted
- Robust 24/7 lone worker welfare support
- Professional assignment instructions & risk assessments
- Rapid deployment
- Construction sector specialists
- Tailored to your needs
- NSI Guarding Gold



## Our Services

- ✓ Out of hours Security Officers
- ✓ Traffic Marshall & Gatehouse services
- ✓ K9 units
- ✓ Mobile patrols
- ✓ Key holding & callout services



## SIA Licensed Security Officers

### Screened, vetted and trained

Our security operatives undergo stringent recruitment & vetting processes prior to working on site. They are SIA licensed & wear full uniform and site specific PPE.

FRG are proud to be an ACS Pacesetter. Only Approved Contractor Scheme security guarding companies scoring in the top 15% in Security Industry Authority (SIA) benchmarking and assessments are eligible to join this elite group.



## NSI Guarding Gold & NSI NACOSS Gold

### Dedicated to high standards

NSI is the most rigorous inspection for businesses operating in the security industry.

NSI Guarding Gold is the mark of approval for the elite reflecting our commitment to high standards of service, integrity, technical expertise and professionalism.

NSI NACOSS Gold is the premier electronic security systems scheme designed for companies who meet the industry's highest technical standards and maintain a commitment to continual improvement.



# CCTV & CAMERA ALARM SOLUTIONS

## SmartSite Ultra CCTV Tower – HYBRID

**The industry's most advanced & fully integrated, rapid deployment CCTV Tower.**

- Rapid deployment
- 100% solar & battery powered
- 8m tall – striking physical appearance
- High definition PTZ camera – 150m IR range
- 150m detection range with wireless PIR detection
- Time lapse video capability
- Live audio challenge
- Customer portal to view images
- 'Unpluggable' design – intruders can't turn the camera off
- Remote monitoring by FRG control room



## SmartSite HD PRO CCTV System

- Clear HD images
- 30m detection range
- Video analytics
- 28 days continuous recording
- Customer portal to view images
- Provides visual assistance during working hours
- Remote monitoring from FRG Control Room



## SmartSite Detect Wireless Visual Alarm system

- Battery powered & self-contained
- Fast & easy to deploy
- 15m detection range
- Portable – Reposition as the project evolves or move to a new site.
- Wireless detection
- Audio siren
- Tamper and damage detection
- Remote monitoring from FRG Control Room





# SmartSite DetectPlus Wireless Visual Alarm System

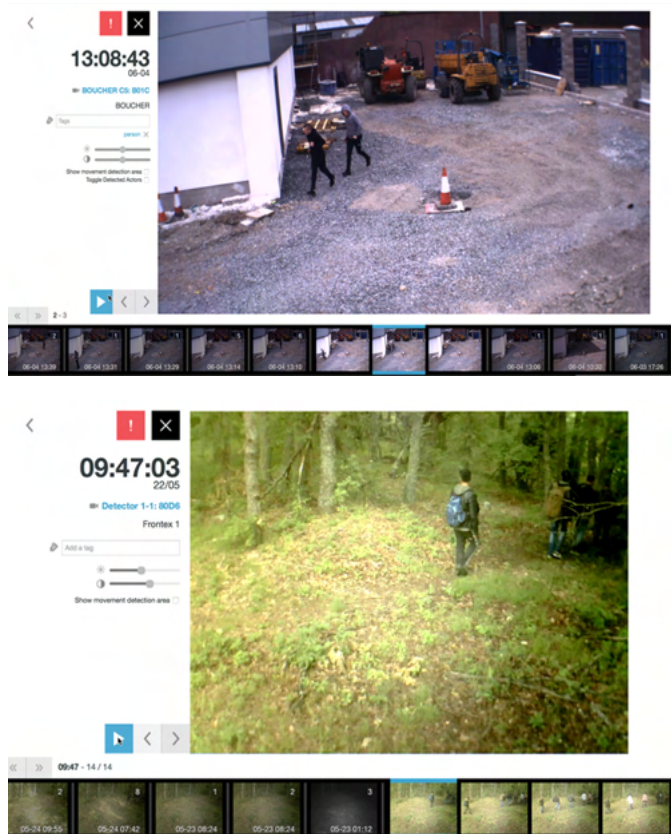
## Advanced wireless intruder detection with intelligent analytics

Our advanced Intruder Detection system, FRG DetectPlus, has the same functions as FRG Detect but with built in analytics software, superior night vision and an increased incident detection range of 35m, both day and night.

FRG DetectPlus uses advanced technology to alert only when the threat is real. The system's innovative algorithm distinguishes between movements of humans and other environmental elements, delivering photo proof of potential threat every time to reduce the instance of false alarms.

With the built-in ability to create its own mesh network, FRG DetectPlus units can quickly link to provide full protection and the intuitive user platform enables multiple cameras, monitoring hundreds of different sites, without the need for constant supervision.

Ideal for sites with no power or remote locations.



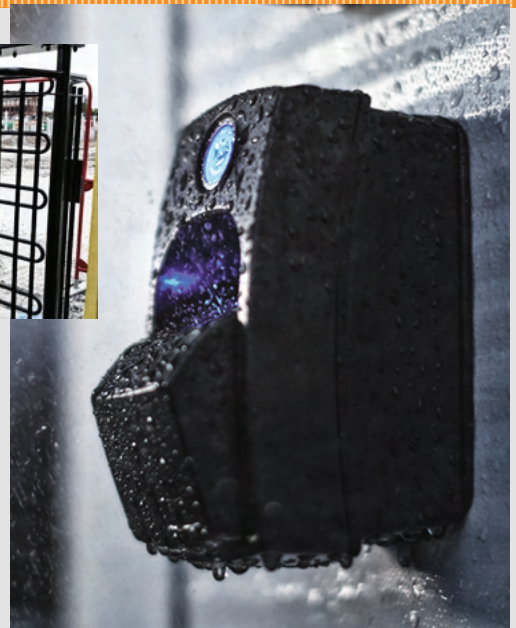
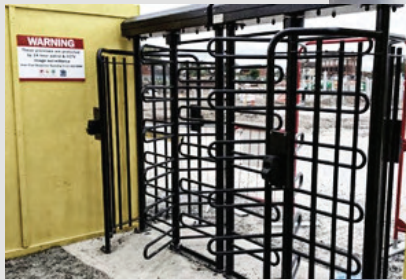
Screenshots from FRG DetectPlus user platform.

- Easy & quick to install
- Completely wireless
- 400 day battery life
- Extended 30m detection range, day & night
- Alerts only when the threat is real
- Eliminates false alarms
- Creates own mesh network
- Anti-tamper/theft alarms
- Easy to hide, easy to move, easy to service
- Fully weatherproof & operational -35° to 55°C

## ACCESS CONTROL SOLUTIONS

### People & Vehicle Management

- Biometrics – Reliable, resilient & data protection compliant
- Proximity systems – Full range of cards, tokens and keypads
- Intercoms – Wired or wireless with audio and/or video
- Turnstiles – Full or half height
- Vehicle barriers - Automatic ANPR or manual
- Admin training including ID card creation
- Integrate with existing systems
- Wide range of reporting capabilities



## FIRE PROTECTION SOLUTIONS

### SmartSite Wireless Fire Alarms

- Easy to use and low maintenance
- HSE compliant
- Fast install – no special equipment required
- Link up to 127 alarm units – grows with your project
- Easy to reposition – housed on mobile fire post stations
- Combined first aid assistance – call for help without site wide evacuation
- Optional heat detection for early warning
- Fault monitoring & tamper proof
- Integrate with site safety and security systems



## SITE FACILITIES MANAGEMENT

### Set up, Logistics & Maintenance

**We offer specialist full site set up and end to end turnkey solutions on sites of all scale.**

- Temporary electrics & plumbing
- Water hygiene – chlorination & certification
- Accommodation & Welfare
- Cleaners
- Air conditioning
- Temporary site & emergency lighting
- Testing & compliance
- Planned & Reactive maintenance & servicing

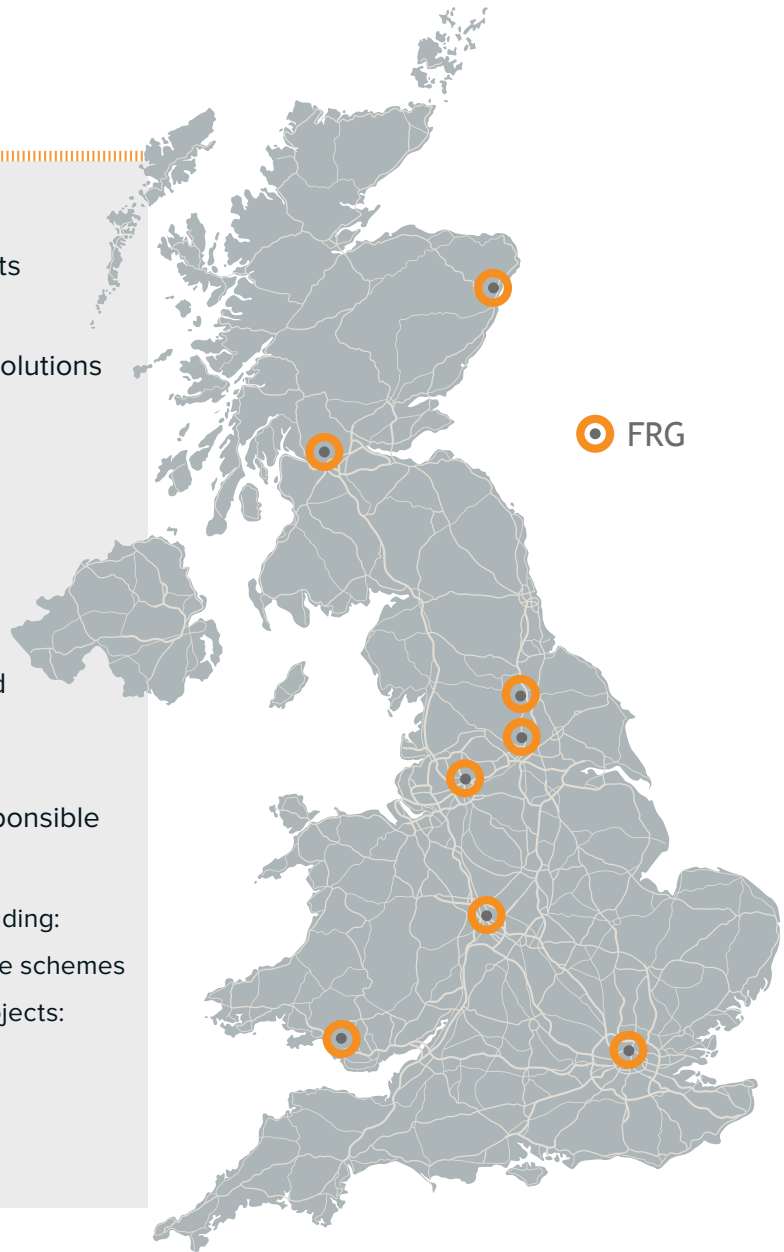


# WHY FRG?

- ✓ Nationwide delivery
- ✓ Construction security specialists
- ✓ Free no obligation site surveys
- ✓ Broad range of cost-effective solutions
- ✓ Fast deployment options
- ✓ Rapid response and reaction
- ✓ Insurance compliance
- ✓ Risk assessments sent direct from site
- ✓ Constant innovation and integration delivering improved value, safety & efficiencies
- ✓ Highly accredited
- ✓ Socially & environmentally responsible
- ✓ Industry leaders

Supporting national projects including:

- o Critical rail & road infrastructure schemes
- o Large scale Design & Build projects: schools, hospitals & more
- o National utilities projects
- o Residential developments



**Head Office:**  
Unit 2, Gemini Business Park,  
Sheepscar Way, Leeds LS7 3JB  
[www.firstresponsegroup.com](http://www.firstresponsegroup.com)

[info@firstresponsegroup.com](mailto:info@firstresponsegroup.com)  
**0330 124 5670**